

NOTES:

1. SEE DEVICE SUMMARY (MLI 0414) FOR CONTROL DEVICE SETTINGS.
2. AT STARTUP SET MIST ELIMINATOR VENT VALVE AT 1/2 OPEN. WITH UNIT AT BASE LOAD PRESSURE IN MAIN LO TANK SHOULD BE -1 TO -2 INCHES [-25 TO -51 MM] OF WATER. ADJUST MIST ELIMINATOR VALVE TO OBTAIN THIS PRESSURE.

REVISIONS			
REV	DESCRIPTION	DATE	APPROVED

REVISE ON CAD ONLY
UG PART: GR0749-0416
(SPEC: 357B1802)

LUBE OIL VENT SYSTEM OPERATING PRESSURES, TEMPERATURES AND FLOWS

SCHEMATIC/CONNECTION IDENTIFICATION	TEMPERATURE		PRESSURE		FLOW	
	NOMINAL	MAXIMUM	MINIMUM	MAXIMUM	MINIMUM	MAXIMUM
L09	130°F (54°C)	200°F (93°C)	-2 IN. H ₂ O (-51 MM H ₂ O)	0 IN. H ₂ O (0 MM H ₂ O)	1 GPM (3.8 LPM)	5 GPM (18.9 LPM)
L010	130°F (54°C)	200°F (93°C)	-2 IN. H ₂ O (-51 MM H ₂ O)	0 IN. H ₂ O (0 MM H ₂ O)	-----	1000 CFM (28.3 M ³ /M)
L017	130°F (54°C)	200°F (93°C)	-----	ATM	0 GPM (0 LPM)	0.01 GPM (.038 LPM)
L051	130°F (54°C)	200°F (93°C)	-2 IN. H ₂ O (-51 MM H ₂ O)	0 IN. H ₂ O (0 MM H ₂ O)	1 GPM (3.8 LPM)	5 GPM (18.9 LPM)
L054	130°F (54°C)	200°F (93°C)	-2 IN. H ₂ O (-51 MM H ₂ O)	0 IN. H ₂ O (0 MM H ₂ O)	-----	600 CFM (17.0 M ³ /M)
L056	130°F (54°C)	200°F (93°C)	-2 IN. H ₂ O (-51 MM H ₂ O)	0 IN. H ₂ O (0 MM H ₂ O)	-----	200 CFM (5.7 M ³ /M)
L077	130°F (54°C)	200°F (93°C)	-2 IN. H ₂ O (-51 MM H ₂ O)	0 IN. H ₂ O (0 MM H ₂ O)	-----	1000 CFM (28.3 M ³ /M)
L078	130°F (54°C)	200°F (93°C)	-2 IN. H ₂ O (-51 MM H ₂ O)	0 IN. H ₂ O (0 MM H ₂ O)	-----	1000 CFM (28.3 M ³ /M)
L085	130°F (54°C)	200°F (93°C)	-2 IN. H ₂ O (-51 MM H ₂ O)	0 IN. H ₂ O (0 MM H ₂ O)	0.5 GPM (1.9 LPM)	2 GPM (7.6 LPM)
L087	130°F (54°C)	200°F (93°C)	-2 IN. H ₂ O (-51 MM H ₂ O)	0 IN. H ₂ O (0 MM H ₂ O)	0.5 GPM (1.9 LPM)	2 GPM (7.6 LPM)
L088	130°F (54°C)	200°F (93°C)	-2 IN. H ₂ O (-51 MM H ₂ O)	0 IN. H ₂ O (0 MM H ₂ O)	-----	800 CFM (22.6 M ³ /M)


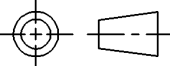
1	PIPING SYMBOLS	277A2415
IT.	NOMENCLATURE	IDENT
LIST OF COMPLEMENTARY DOCUMENTS		

-	-	-	-	REV	REV STATUS
4	3	2	1	SH	OF SHEETS

GR0749

© COPYRIGHT 2001 GENERAL ELECTRIC COMPANY

PROPRIETARY INFORMATION-THIS DOCUMENT CONTAINS PROPRIETARY INFORMATION OF GENERAL ELECTRIC COMPANY AND MAY NOT BE USED OR DISCLOSED TO OTHERS, EXCEPT WITH THE WRITTEN PERMISSION OF GENERAL ELECTRIC COMPANY.

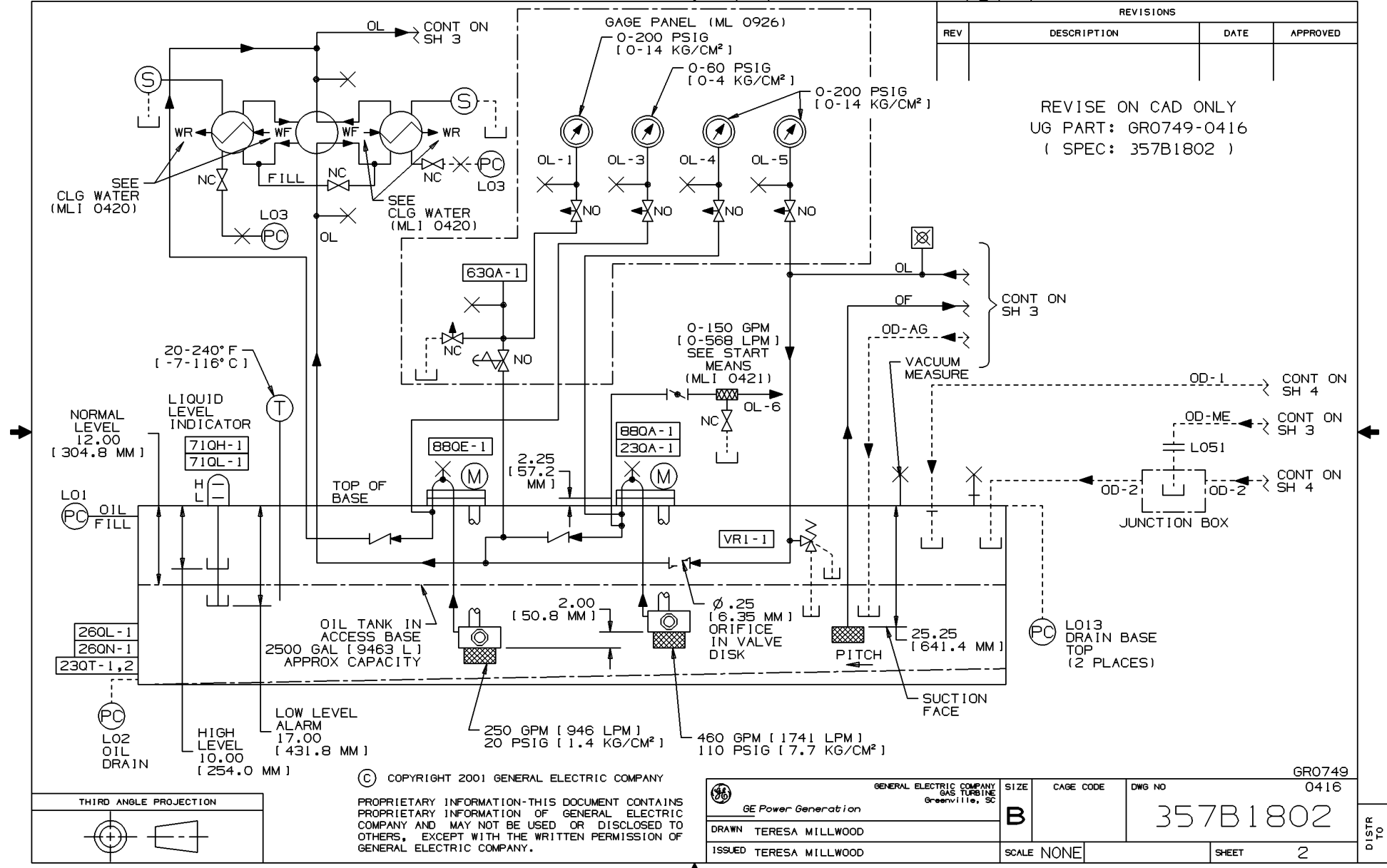
UNLESS OTHERWISE SPECIFIED DIMENSIONS ARE IN INCHES. TOLERANCES ON: 2 PL DECIMALS ± 3 PL DECIMALS ± ANGLES ± FRACTIONS ±	SIGNATURES	DATE	 GE Power Generation GENERAL ELECTRIC COMPANY GAS TURBINE Greenville, SC
	DRAWN TERESA MILLWOOD	01-06-18	
	CHECKED LARRY KENNEDY	01-06-19	
	ENGRG THOMAS GARNETT	01-06-19	
	ISSUED TERESA MILLWOOD	01-06-20	
 THIRD ANGLE PROJECTION	QUAL CONT LARRY KENNEDY	01-06-20	DIAGRAM, SCH PP-LUBE OIL FIRST MADE FOR ML-7A1PEA228-1 0416
	SIZE B	CAGE CODE	DWG NO 357B1802
	SIM TO: 355B8765	SCALE NONE	SHEET 1

DISTR TO

DT-1N

REVISIONS			
REV	DESCRIPTION	DATE	APPROVED

REVISE ON CAD ONLY
UG PART: GR0749-0416
(SPEC: 357B1802)



© COPYRIGHT 2001 GENERAL ELECTRIC COMPANY

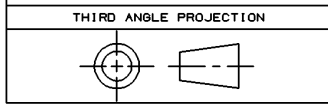
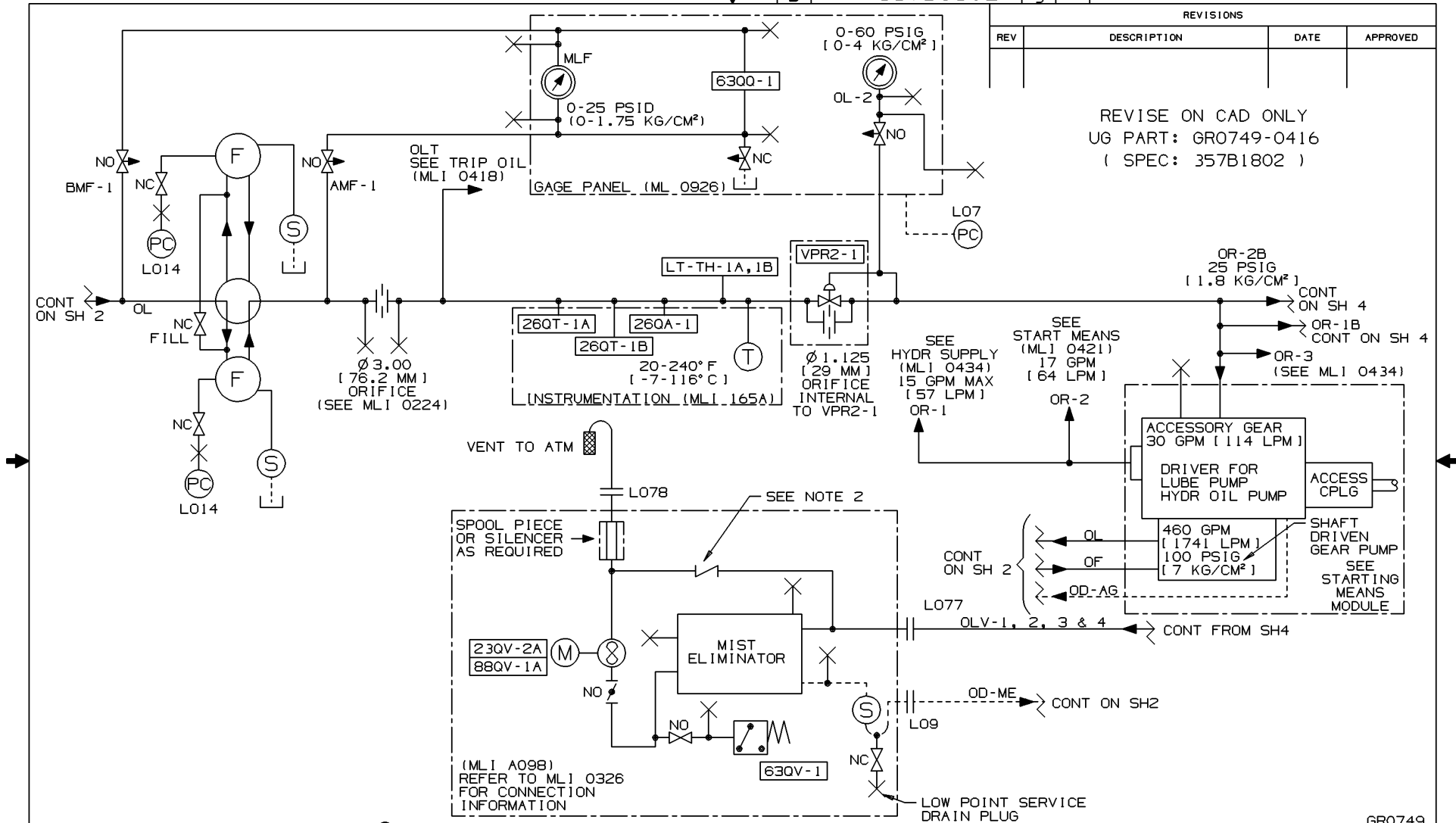
PROPRIETARY INFORMATION-THIS DOCUMENT CONTAINS PROPRIETARY INFORMATION OF GENERAL ELECTRIC COMPANY AND MAY NOT BE USED OR DISCLOSED TO OTHERS, EXCEPT WITH THE WRITTEN PERMISSION OF GENERAL ELECTRIC COMPANY.

 GENERAL ELECTRIC COMPANY GAS TURBINE Greenville, SC		SIZE B	CAGE CODE	DWG NO 357B1802	GR0749 0416
DRAWN TERESA MILLWOOD ISSUED TERESA MILLWOOD		SCALE NONE	SHEET 2		DISTR TO

SIZE **B** DWG NO 357B1802 SH 3 REV -

REVISIONS			
REV	DESCRIPTION	DATE	APPROVED

REVISE ON CAD ONLY
UG PART: GR0749-0416
(SPEC: 357B1802)



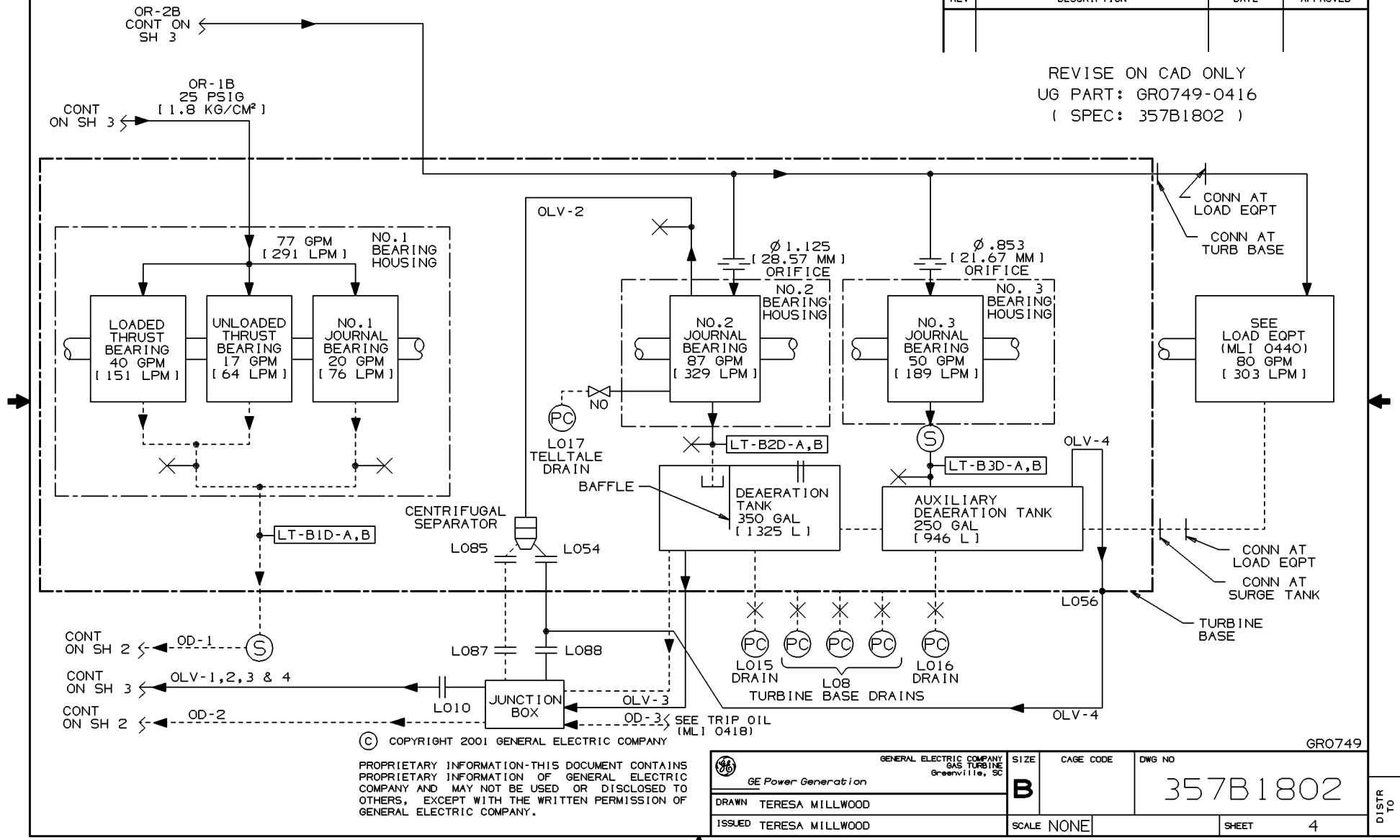
© COPYRIGHT 2001 GENERAL ELECTRIC COMPANY

PROPRIETARY INFORMATION-THIS DOCUMENT CONTAINS PROPRIETARY INFORMATION OF GENERAL ELECTRIC COMPANY AND MAY NOT BE USED OR DISCLOSED TO OTHERS, EXCEPT WITH THE WRITTEN PERMISSION OF GENERAL ELECTRIC COMPANY.

GE Power Generation		SIZE B	CAGE CODE	DWG NO 357B1802	GR0749 0416
DRAWN TERESA MILLWOOD		SCALE NONE		SHEET 3	
ISSUED TERESA MILLWOOD				DISTR TO	

REVISIONS			
REV	DESCRIPTION	DATE	APPROVED

REVISE ON CAD ONLY
UG PART: GR0749-0416
(SPEC: 357B1802)



© COPYRIGHT 2001 GENERAL ELECTRIC COMPANY
PROPRIETARY INFORMATION-THIS DOCUMENT CONTAINS
PROPRIETARY INFORMATION OF GENERAL ELECTRIC
COMPANY AND MAY NOT BE USED OR DISCLOSED TO
OTHERS, EXCEPT WITH THE WRITTEN PERMISSION OF
GENERAL ELECTRIC COMPANY.

GENERAL ELECTRIC COMPANY GE Power Generation		SIZE B	CAGE CODE	DWG NO 357B1802
DRAWN TERESA MILLWOOD		SCALE NONE		SHEET 4
ISSUED TERESA MILLWOOD		DISTR TO		